

Midland County Road Commission

BID FORM

Sealed Proposals will be received at the Midland County Road Commission office located at 2334 N. Meridian Road, Sanford, Michigan, until:

DATE: Wednesday, March 20, 2019 at 1:00 PM
Item No. 1 – Tree Removal

<u>ITEM</u>	<u>Qty.</u>	<u>Pay Unit</u>	<u>Unit Price</u>	<u>Bid Amount</u>
Tree, Rem, 6 inch to 23 inch	3	Each	_____	_____
Tree, Rem, 24 inch to 36 inch	12	Each	_____	_____
Tree, Rem, 37 inch and larger	2	Each	_____	_____
Stump, Rem, 6 inch to 23 inch	3	Each	_____	_____
Stump, Rem, 24 inch to 36 inch	12	Each	_____	_____
Stump, Rem, 37 inch and larger	2	Each	_____	_____
TOTAL BID				_____

COMPANY BIDDING _____

CONTACT PERSON _____

ADDRESS _____

PHONE & FAX _____

AUTHORIZED SIGNATURE

TITLE

INDICATE ON ENVELOPE: Company Name, Item Number, Bid Item, Time and Date

Midland County Road Commission

GENERAL REQUIREMENTS:

The undersigned is licensed and insured to complete the work described herein. A certificate of insurance shall be supplied by the contractor naming the Midland County Road Commission as additionally insured.

The undersigned has examined the location(s) of the work described herein and is fully informed as to the nature of the work and conditions relating to its performance and understands the quantities shown are approximate and are subject to either increase or decrease at no change in unit prices.

The undersigned hereby proposes to furnish all necessary equipment, tools, apparatus, and other means of construction, do all of the work, furnish all materials except as otherwise specified herein; and, for the unit prices named in the itemized bid, to complete the work herein described in strict accordance with the plans and the requirements of these bid documents.

The undersigned further proposes to perform extra work (for items that are not included with the itemized bid) that may be authorized by the Midland County Road Commission. Compensation for extra work will be made on the basis of an agreed upon unit price prior to performing the extra work.

Award of the contract shall be made at the next regular scheduled board meeting after the bid opening.

SPECIAL PROVISION:

Tree Removal

A total of 6 additional plan sheets are provided to show locations of trees slated for removal. The price bid per Each Tree Rem shall include cutting into maximum 8' logs and placed on homeowners property (outside of the right-of-way) if homeowner chooses to keep the wood, otherwise complete removal and hauling off site to contractors determined location.

Stump Removal

Stump removal shall consist of complete removal of the stump via mechanical means or grinding the stump to a minimum of 2' below the surface. Contractor shall rough grade each site to a level/safe condition.

Maintaining Traffic

Midland County Road Commission will provide for no more than 5 continuous days of traffic detour for tree felling/removal. Traffic control beyond the 5 days of detour will be at the contractor's expense.

Contractor shall be responsible for notifying MISS DIG prior to removals.

All work shall be completed weekdays **Monday thru Friday only** and coordinated with MCRC.

The project shall be started on or after March 25, 2019 and shall be **completed by April 12, 2019**.

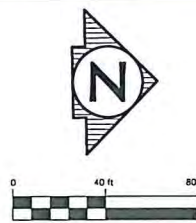
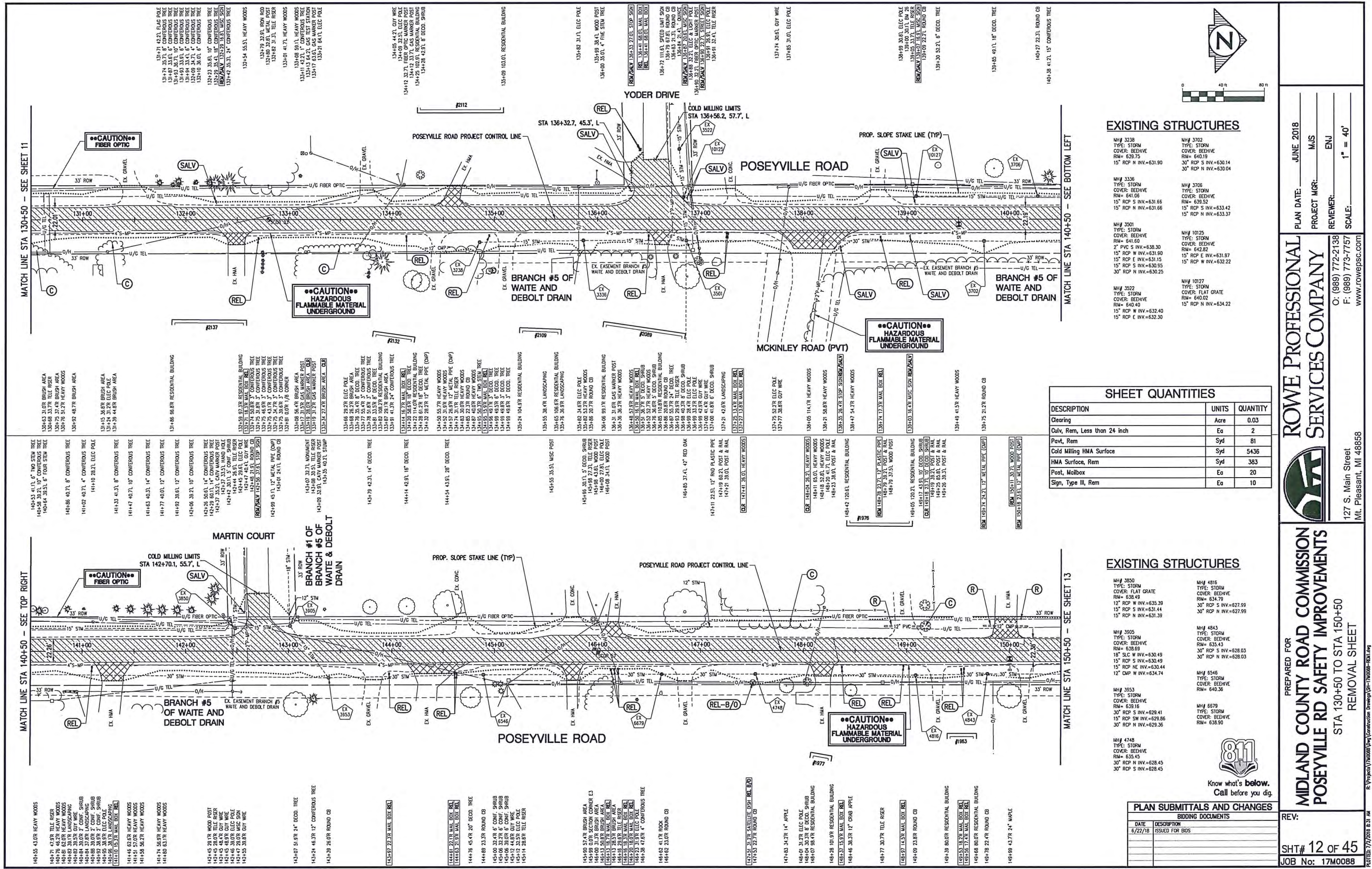
MIDLAND COUNTY ROAD COMMISSION

STANDARD INSTRUCTIONS TO BIDDERS

1. RECEIPT AND OPENING OF PROPOSALS: Sealed bids will be accepted and time stamped upon receipt in the office of the Midland County Road Commission, located at 2334 N. Meridian Rd., Sanford, Michigan, 48657, until the indicated date on the attached Notice to Bidders.
2. BID FORM: Proposals shall be submitted on forms enclosed.
3. SUBMISSION OF BIDS:
 - (a) Envelopes containing bids must be submitted in a sealed, opaque envelope and marked on the face with the name and address of bidder, date and hour of opening, and name of items or commodity in bid. Bidder may elect to email bid form to brenda@midlandroads.com. Bid form must be filled out completely and indicate the bid item and number in the subject line. All submissions must be received prior to the bid opening time indicated on the bid form. It is the responsibility of the bidder to confirm receipt of the submittal prior to bid opening.
 - (b) Any proposals received after the advertised time for opening shall be declared void. This applies to bids sent by mail as well as those delivered.
 - (c) Any bidder may withdraw his bid by written request at any time prior to the advertised time for opening.
 - (d) Telephone or faxed bids are not acceptable. Telephone or faxed amendments or withdrawals will not be accepted under any circumstances.
 - (e) Unless otherwise specified, no bid may be withdrawn for a period of thirty (30) days from date of bid opening.
 - (f) Negligence on the part of the bidder in preparing the bid confers no rights for the withdrawal of the bid after it has been opened.
 - (g) Proposals received prior to time of opening will be securely kept unopened. No responsibility will attach to an officer or person for the premature opening of a proposal not properly addressed and identified.
4. SALES AND EXCISE TAXES:

The Contractor shall include and will be deemed to have included in its bid and contract price all applicable Michigan Sales and Use taxes which have been enacted into law as of the date the bid is submitted. To the extent of any conflict, this Special Provision controls over Division 1 of the 2012 MDOT Standard Specification for Construction.

5. All construction work performed within the county right-of-way will require appropriate traffic control according to the current Michigan Department of Transportation specifications.
6. INSURANCE:
 - (a) Title VI Certification: The Midland County Road Commission assures all its programs and activities will be free from discrimination, whether those programs and activities are federally funded or not.
 - (b) A Certificate of Insurance will be supplied by the bidders for contractor work naming the Midland County Road Commission, its Commissioners and its employees as additionally insured.
7. The Midland County Road Commission reserves the right to reject any and all proposals, to waive any irregularities in the proposals received and to accept the proposal or parts thereof deemed in their opinion, to be in the best interest of the Midland County Road Commission.



EXISTING STRUCTURES

MH# 3238 TYPE: STORM COVER: BEEHIVE RIM= 639.75 15' RCP N INV.=631.90	MH# 3702 TYPE: STORM COVER: BEEHIVE RIM= 640.19 30' RCP S INV.=630.14 30' RCP N INV.=630.04
MH# 3336 TYPE: STORM COVER: BEEHIVE RIM= 641.06 15' RCP S INV.=631.66 15' RCP N INV.=631.66	MH# 3706 TYPE: STORM COVER: BEEHIVE RIM= 639.52 15' RCP S INV.=633.42 15' RCP N INV.=633.37
MH# 3501 TYPE: STORM COVER: BEEHIVE RIM= 641.60 2" PVC S INV.=638.30 15' RCP W INV.=631.90 15' RCP E INV.=631.15 15' RCP S INV.=630.95 30' RCP N INV.=630.25	MH# 10125 TYPE: STORM COVER: BEEHIVE RIM= 642.82 15' RCP E INV.=631.97 15' RCP W INV.=632.22
MH# 3522 TYPE: STORM COVER: BEEHIVE RIM= 640.40 15' RCP W INV.=632.40 15' RCP E INV.=632.30	MH# 10127 TYPE: STORM COVER: FLAT GRATE RIM= 640.02 15' RCP N INV.=634.22

SHEET QUANTITIES

DESCRIPTION	UNITS	QUANTITY
Clearing	Acre	0.03
Culv, Rem, Less than 24 inch	Ea	2
Pavt, Rem	Syd	81
Cold Milling HMA Surface	Syd	5436
HMA Surface, Rem	Syd	383
Post, Mailbox	Ea	20
Sign, Type III, Rem	Ea	10

EXISTING STRUCTURES

MH# 3850 TYPE: STORM COVER: FLAT GRATE RIM= 638.49 12' RCP N INV.=635.39 15' RCP S INV.=631.44 15' RCP N INV.=631.39	MH# 4816 TYPE: STORM COVER: BEEHIVE RIM= 634.79 30' RCP S INV.=627.59 30' RCP N INV.=627.59
MH# 3905 TYPE: STORM COVER: BEEHIVE RIM= 638.69 18' SLC W INV.=630.49 15' RCP S INV.=630.49 15' RCP NE INV.=630.44 12' CMP W INV.=634.74	MH# 4843 TYPE: STORM COVER: BEEHIVE RIM= 635.43 30' RCP S INV.=628.03 30' RCP N INV.=628.03
MH# 3953 TYPE: STORM COVER: BEEHIVE RIM= 639.16 30' RCP S INV.=629.41 15' RCP SW INV.=629.86 30' RCP N INV.=629.36	MH# 6546 TYPE: STORM COVER: BEEHIVE RIM= 640.36
MH# 4748 TYPE: STORM COVER: BEEHIVE RIM= 635.45 30' RCP N INV.=628.45 30' RCP S INV.=628.45	MH# 6579 TYPE: STORM COVER: BEEHIVE RIM= 636.50

PLAN SUBMITTALS AND CHANGES	
BIDDING DOCUMENTS	
DATE	DESCRIPTION
6/22/18	ISSUED FOR BIDS

PREPARED FOR

MIDLAND COUNTY ROAD COMMISSION

POSEYVILLE RD SAFETY IMPROVEMENTS

STA 130+50 TO STA 150+50

REMOVAL SHEET

ROWE PROFESSIONAL SERVICES COMPANY

127 S. Main Street
Mt. Pleasant, MI 48858

PLAN DATE: JUNE 2018
PROJECT MGR: MJS
REVIEWER: ENJ
SCALE: 1" = 40'

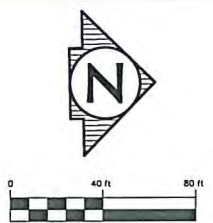
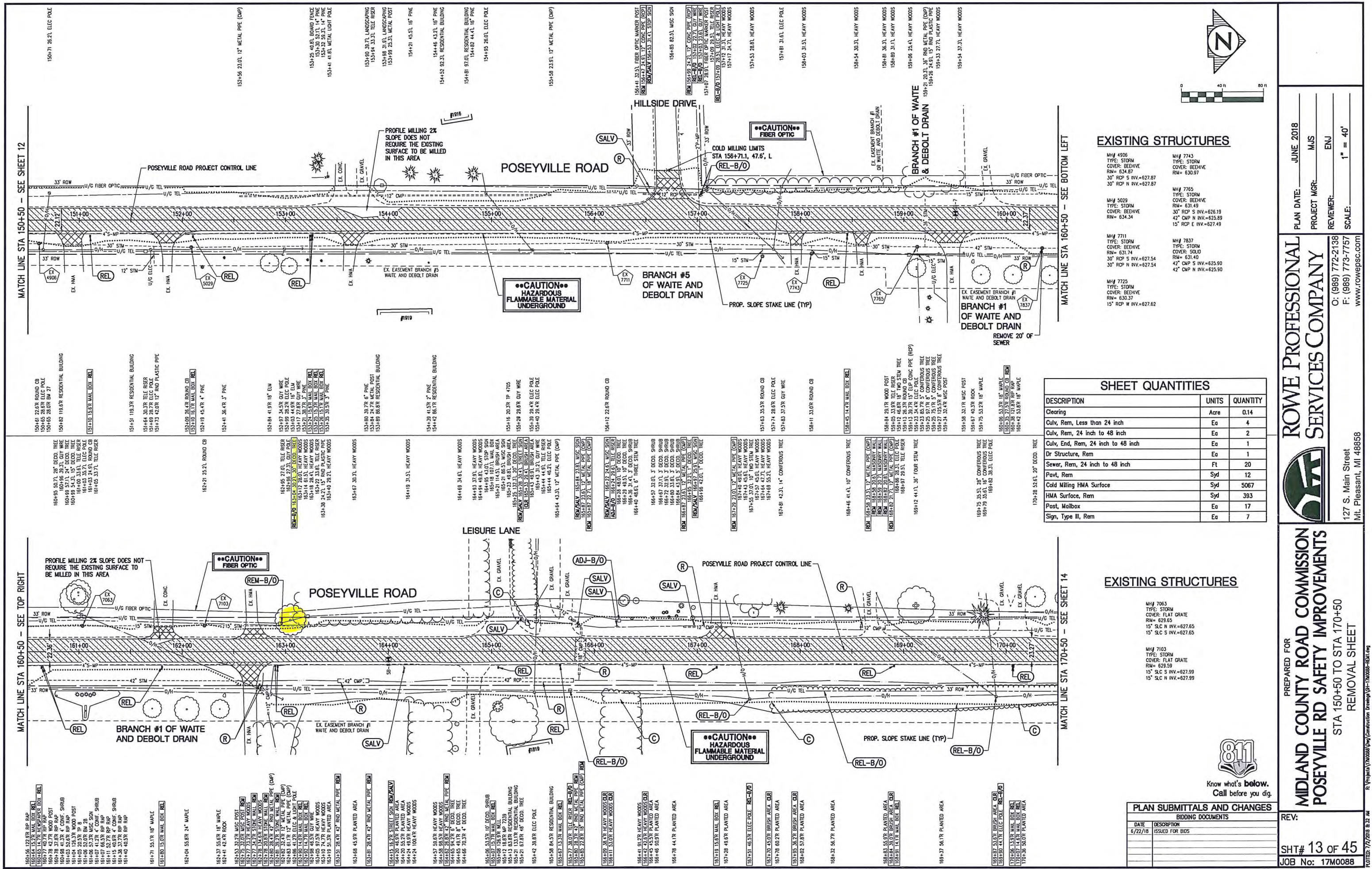
REV: SHT# 12 of 45
JOB No: 17M0088

Know what's below.
Call before you dig.

811

FL0108-7/7/2018 8:31 AM

6: Proj:sta17m0088\Draw\Construction\Drawings\17M0088-REMOV.dwg



EXISTING STRUCTURES

MH# 4906 TYPE: STORM COVER: BEEHIVE RM= 634.87 30" RCP S INV.=627.87 30" RCP N INV.=627.87	MH# 7743 TYPE: STORM COVER: BEEHIVE RM= 630.97
MH# 5029 TYPE: STORM COVER: BEEHIVE RM= 634.34	MH# 7765 TYPE: STORM COVER: BEEHIVE RM= 631.49 30" RCP S INV.=626.19 42" RCP N INV.=626.89 15" RCP E INV.=627.49
MH# 7711 TYPE: STORM COVER: BEEHIVE RM= 631.74 30" RCP S INV.=627.54 30" RCP N INV.=627.54	MH# 7837 TYPE: STORM COVER: SOLID RM= 631.40 42" CMP N INV.=625.90 42" CMP E INV.=625.90
MH# 7725 TYPE: STORM COVER: BEEHIVE RM= 630.37 15" RCP W INV.=627.62	

SHEET QUANTITIES

DESCRIPTION	UNITS	QUANTITY
Clearing	Acre	0.14
Culv, Rem, Less than 24 inch	Ea	4
Culv, Rem, 24 inch to 48 inch	Ea	2
Culv, End, Rem, 24 inch to 48 inch	Ea	1
Dr Structure, Rem	Ea	1
Sewer, Rem, 24 inch to 48 inch	Ft	20
Pavt, Rem	Syd	12
Cold Milling HMA Surface	Syd	5067
HMA Surface, Rem	Syd	393
Post, Mailbox	Ea	17
Sign, Type III, Rem	Ea	7

EXISTING STRUCTURES

MH# 7063 TYPE: STORM COVER: FLAT GRATE RM= 628.55 15" S.C N INV.=627.65 15" S.C S INV.=627.65	MH# 7103 TYPE: STORM COVER: FLAT GRATE RM= 628.59 15" S.C S INV.=627.99 15" S.C S INV.=627.99
--	--

PLAN SUBMITTALS AND CHANGES

DATE	DESCRIPTION
6/22/18	ISSUED FOR BIDS

PREPARED FOR
MIDLAND COUNTY ROAD COMMISSION
POSEYVILLE RD SAFETY IMPROVEMENTS
STA 150+50 TO STA 170+50
REMOVAL SHEET

ROWE PROFESSIONAL
SERVICES COMPANY

PLAN DATE: JUNE 2018
PROJECT MGR: MJS
REVIEWER: ENJ
SCALE: 1" = 40'

REV:
SHT# 13 of 45
JOB No: 17M0088

127 S. Main Street
Mt. Pleasant, MI 48858

Plot Date: 7/2/2018 8:32 AM
E:\Projects\17M0088\Draw\Construction\Drawings\17M0088-REMOV.DWG



EXISTING STRUCTURES

SHEET QUANTITIES		
DESCRIPTION	UNITS	QUANTITY
Clearing	Acre	0.07
Culv, Rem, Less than 24 inch	Ea	19
Culv, Rem, 24 inch to 48 inch	Ea	1
Culv, End, Rem, Less than 24 inch	Ea	1
Dr Structure, Rem	Ea	5
Sewer, Rem, Less than 24 inch	Fl	491
Pavt, Rem	Syd	38
Cold Milling HMA Surface	Syd	5301
HMA Surface, Rem	Syd	580
Post, Mailbox	Ea	32
Sign, Type III, Rem	Ea	11

EXISTING STRUCTURES

- MH# 5728
TYPE: STORM
COVER: BEEHIVE
RW= 626.37
12" VOP N INV.=624.37
12" VOP S INV.=624.37
- MH# 5815
TYPE: STORM
COVER: FLAT GRATE
RW= 628.24
12" VOP S INV.=626.29
12" VOP N INV.=626.29
- MH# 6010
TYPE: STORM
COVER: BEEHIVE
RW= 627.63
12" VOP N INV.=624.63
12" VOP S INV.=624.73
- MH# 6086
TYPE: STORM
COVER: FLAT GRATE
RW= 628.94
12" S.C N INV.=627.24
12" S.C S INV.=627.24
- MH# 6176
TYPE: STORM
COVER: SOLID
RW= 628.51
12" VOP N INV.=625.05

PLAN SUBMITTALS AND CHANGES

BIDDING DOCUMENTS	
DATE	DESCRIPTION
6/22/18	ISSUED FOR BIDS

PLAN DATE: JUNE 2018
PROJECT MGR: MJS
REVIEWER: ENJ
SCALE: 1" = 40'

ROWE PROFESSIONAL SERVICES COMPANY

127 S. Main Street
Mt. Pleasant, MI 48858

O: (989) 772-2138
F: (989) 773-7757
www.rowepsc.com

MIDLAND COUNTY ROAD COMMISSION
POSEYVILLE RD SAFETY IMPROVEMENTS
STA 170+50 TO STA 190+50
REMOVAL SHEET

REV: SHT# 14 of 45
JOB No: 17M0088

190+51 21.6' GUY WIRE
190+52 37.3' ELEC POLE
190+53 41.0' 3" DEC. SHUB
190+54 38.2' GUY WIRE
190+55 37.4' TELE RISER
190+56 22.8' 15" METAL PIPE (C/P)
190+57 20.1' MASONRY WALL (R)

191+35 17.3' MISC. SIGN (R/SALV)
191+47 15.8' MAIL BOX (R)

191+57 21.4' 35" MAPLE (R-B/O)
191+74 25.0' IRON PIPE

191+81 19.5' ROUND CB
191+81 24.1' 30" MAPLE (R-B/O)
191+92 47.6' ELEC POLE

192+48 16.5' MAIL BOX (R)
192+53 23.5' 35" MAPLE (R-B/O)

192+72 24.3' 30" MAPLE (R-B/O)
192+78 28.8' 5" DEC. SHUB

193+05 23.9' 48" MAPLE (R-B/O)
193+24 32.6' TELE RISER

193+37 24.3' 24" MAPLE (R-B/O)
193+42 33.6' 5" DEC. SHUB

193+43 18.0' MAIL BOX (R)
193+43 48.2' ELEC POLE
193+44 41.4' 5" DEC. SHUB

193+74 25.1' 15" MAPLE (R-B/O)
193+91 24.6' 30" MAPLE (R-B/O)

194+05 19.6' MISC. SIGN (R/SALV)
194+20 23.7' 30" MAPLE (R-B/O)

194+22 42.4' 18" SUMP
194+36 24.4' 16" MAPLE (R-B/O)

194+53 24.2' 24" MAPLE (R-B/O)
194+65 24.3' 18" MAPLE (R-B/O)

194+72 34.3' 4" DEC. SHUB
194+81 36.1' 24" MAPLE

194+85 24.2' 24" MAPLE (R-B/O)
194+85 24.1' 30" MAPLE (R-B/O)

195+23 19.4' MAIL BOX (R)

195+69 53.6' TELE RISER
195+69 47.6' ELECTRIC METER
196+00 31.7' TELE RISER
196+05 31.6' TELE RISER
196+08 50.3' ELEC POLE
196+08 36.8' GUY WIRE

196+51 18.2' MAIL BOX (R)

197+47 48.0' TELE RISER
197+48 48.1' ELEC POLE
197+55 28.0' 12" METAL PIPE (C/P)

198+48 34.2' 12" METAL PIPE (C/P)

198+72 44.8' ELEC POLE

199+32 28.0' METAL POST
199+44 40.1' 12" RND CONC PIPE (RCP)

199+55 55.3' GUY WIRE
199+62 55.3' GUY WIRE
199+69 44.6' ELEC POLE
199+72 83.6' FIBER OPTIC MARKER POST
199+72 75.7' TELE RISER

199+84 15.6' TRAFFIC SIGNAL
200+05 49.4' MONUMENT BOX
200+05 49.5' SECTION CORNER E13

200+36 72.5' METAL POST
200+43 10.5' GUY WIRE
200+46 50.9' FIBER OPTIC MARKER POST
200+55 73.3' 12" METAL PIPE (C/P)

200+58 61.4' GATE VALVE
200+61 64.4' GATE VALVE
200+64 74.3' METAL POST
200+64 73.0' FIRE HYDRANT
200+74 62.2' 12" METAL PIPE (C/P)

PLAN SUBMITTALS AND CHANGES	
BIDDING DOCUMENTS	
DATE	DESCRIPTION
6/22/18	ISSUED FOR BIDS



EXISTING STRUCTURES

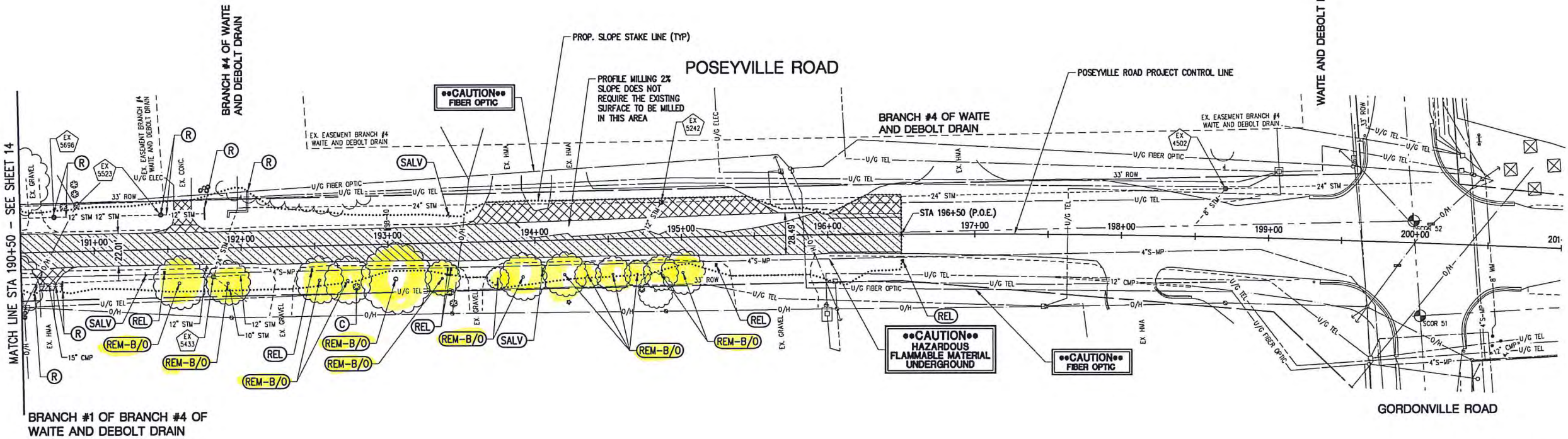
MH# 4502
TYPE: STORM
COVER: BEEHIVE
RIM= 623.66
24" RCP N INV.=618.66
12" CMP S INV.=625.78
8" S/C SE INV.=620.36
24" RCP S INV.=618.61

MH# 5242
TYPE: STORM
COVER: SLOD
RIM= 627.72
12" CMP SE INV.=622.22
24" RCP N INV.=621.82
24" CMP S INV.=621.72

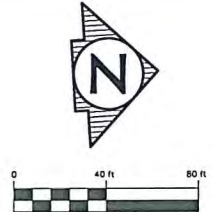
MH# 5433
TYPE: STORM
COVER: FLAT GRATE
RIM= 628.53
10" VCP NE INV.=624.93
12" VCP SW INV.=624.93
12" VCP N INV.=623.73
24" CMP S INV.=622.93

MH# 5523
TYPE: STORM
COVER: FLAT GRATE
RIM= 628.78
12" CMP N INV.=625.78
12" CMP N INV.=625.78

MH# 5696
TYPE: STORM
COVER: FLAT GRATE
RIM= 628.28
12" CMP S INV.=626.28
12" CMP N INV.=626.28



SHEET QUANTITIES		
DESCRIPTION	UNITS	QUANTITY
Culv, Rem, Less than 24 inch	Ea	1
Culv, End, Rem, 24 inch to 48 inch	Ea	2
Dr Structure, Rem	Ea	2
Sewer, Rem, Less than 24 inch	Fl	133
Pavt, Rem	Syd	24
Cold Milling HMA Surface	Syd	1426
HMA Surface, Rem	Syd	376
Post, Mailbox	Ea	6
Sign, Type III, Rem	Ea	3



PREPARED FOR
MIDLAND COUNTY ROAD COMMISSION
POSEYVILLE RD SAFETY IMPROVEMENTS
STA 190+50 TO STA 196+50 (P.O.E.)
REMOVAL SHEET

ROWE PROFESSIONAL SERVICES COMPANY
127 S. Main Street
Mt. Pleasant, MI 48858
O: (989) 772-2138
F: (989) 773-7757
www.rowepsc.com

PLAN DATE: JUNE 2018
PROJECT MGR: MJS
REVIEWER: ENJ
SCALE: 1" = 40'

REV: SHT# 15 of 45
JOB No: 17M0088