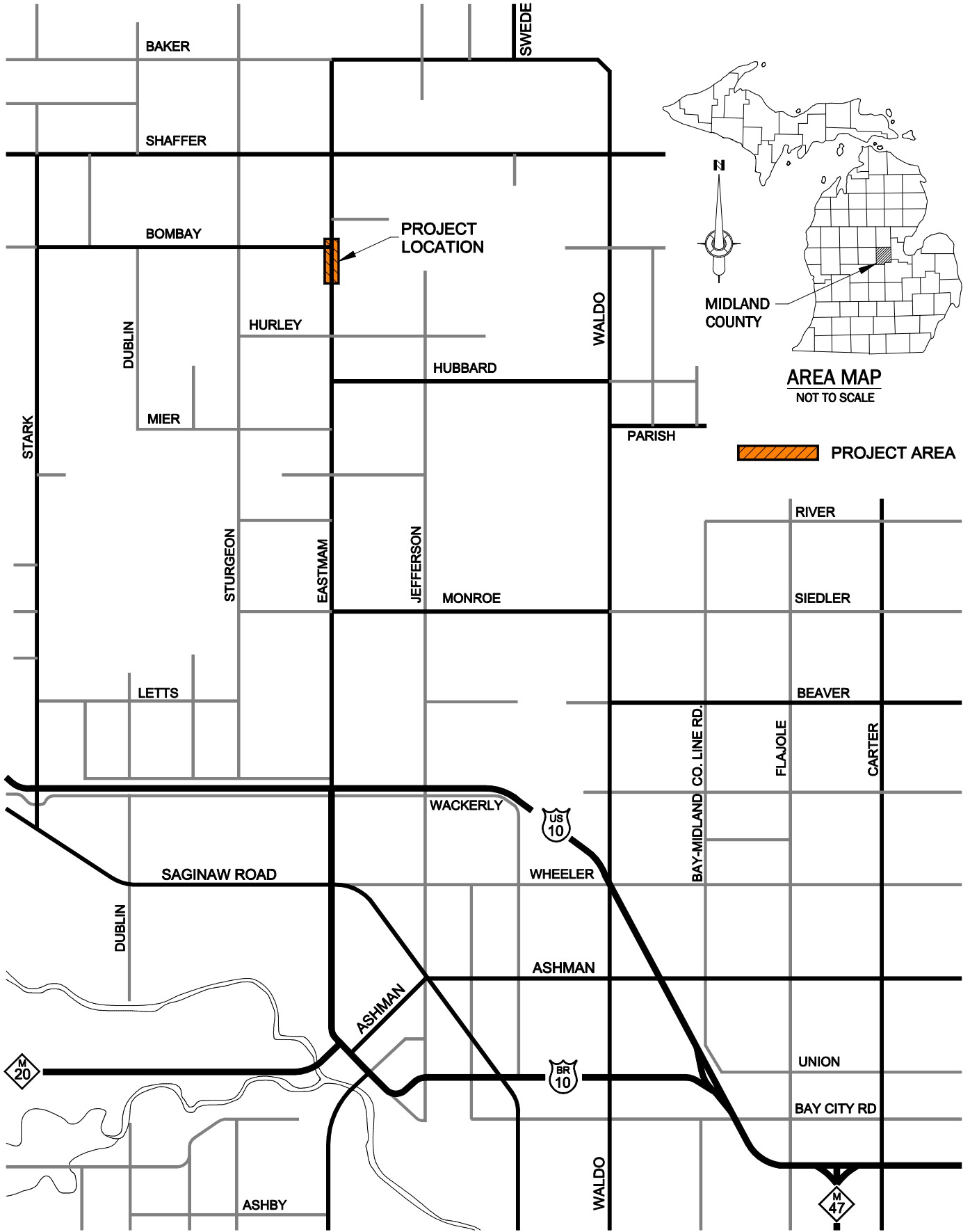
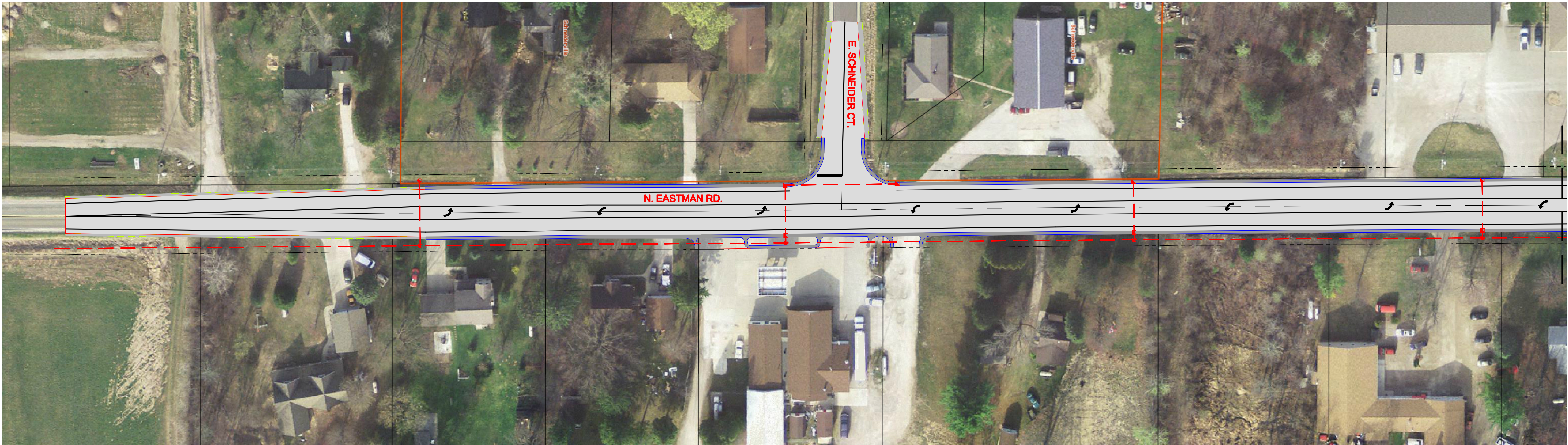


EASTMAN ROAD - 2017 SAFETY GRANT APPLICATION
MIDLAND COUNTY ROAD COMMISSION

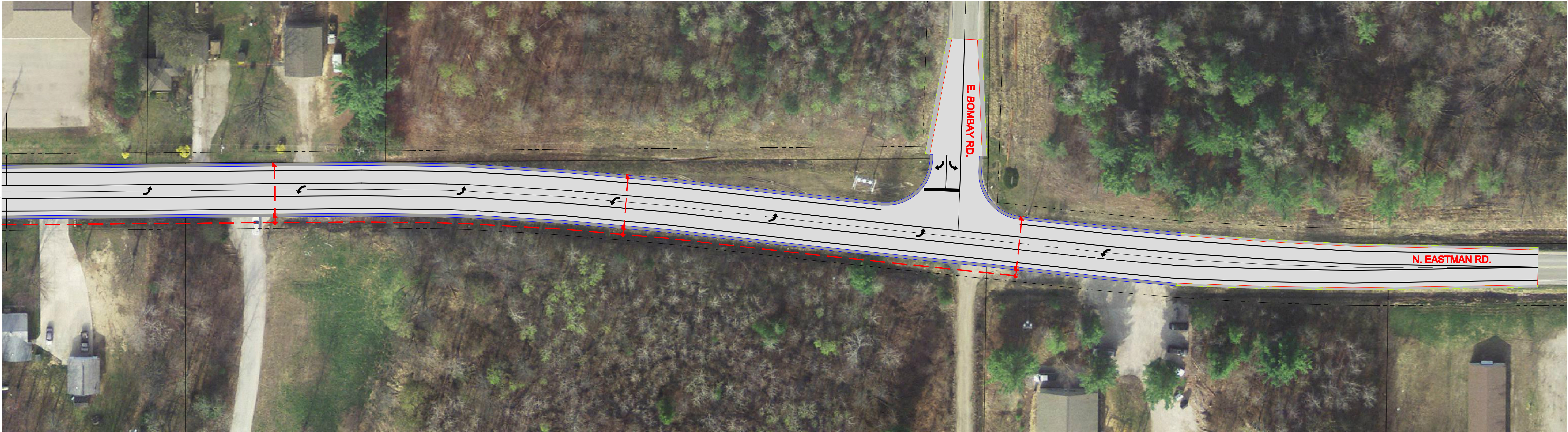
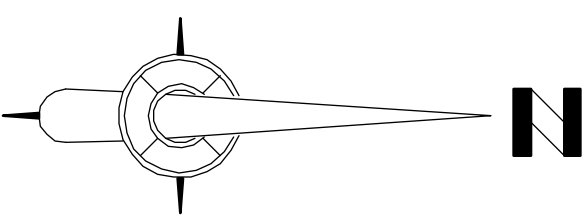
LOCATION MAP



T.15 N. - R.2 E. AND T.16 N. - R.2 E.
LARKIN AND MILLS TOWNSHIPS, MIDLAND COUNTY, MICHIGAN

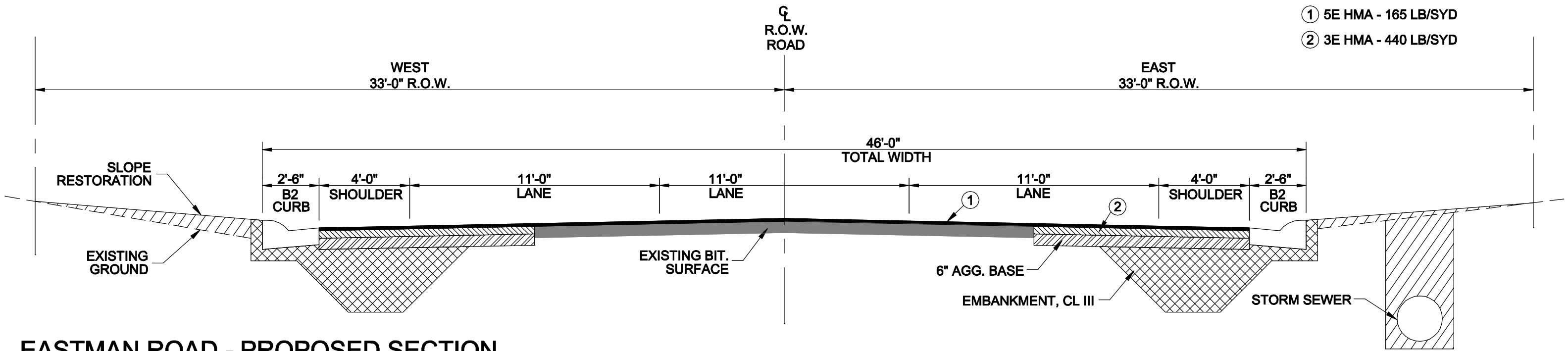


EASTMAN ROAD - PROPOSED PLAN VIEW
 SCALE: NOT TO SCALE



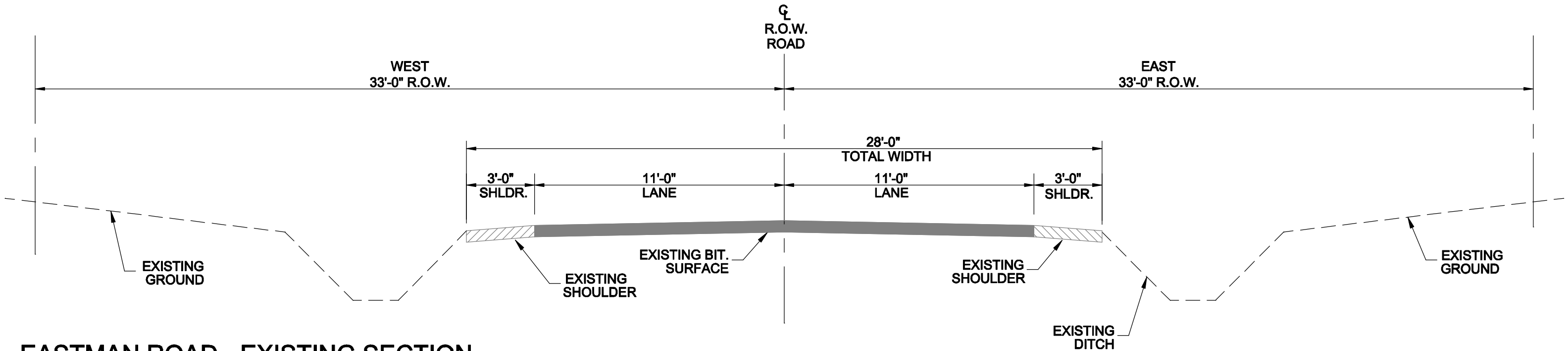
EASTMAN ROAD - PROPOSED PLAN VIEW
 SCALE: NOT TO SCALE

MIDLAND COUNTY ROAD COMMISSION
EASTMAN ROAD PROPOSED COORIDOR
AND INTERSECTION SAFETY IMPROVEMENTS
 SOUTH OF SCHNEIDER COURT TO NORTH OF BOMBAY ROAD
 LARKIN TOWNSHIP - MIDLAND COUNTY



EASTMAN ROAD - PROPOSED SECTION

SCALE: NOT TO SCALE



EASTMAN ROAD - EXISTING SECTION

SCALE: NOT TO SCALE

MIDLAND COUNTY ROAD COMMISSION

EASTMAN ROAD PROPOSED COORIDOR
AND INTERSECTION SAFETY IMPROVEMENTS

SOUTH OF SCHNEIDER COURT TO NORTH OF BOMBAY ROAD
LARKIN AND MILLS TOWNSHIPS - MIDLAND COUNTY